

Background

An ongoing criminal conspiracy to terrorize and intimidate witnesses exists, for the sake of ongoing obstruction of justice.

One spoke of this ongoing conspiracy has implicated government, university, and college employees in a years-long conspiracy to overtly further this criminal spoke, between at least 2014 through to at least July 25, 2023, circa 6AM, and where at least one target of this ongoing criminal conspiracy with many spokes is a former government, university, and college employee.

One sub-spoke of this particular spoke includes government, university, and college employees from McClellan Park airfield in McClellan, Sacramento, CA, within Sacramento County.

The government, university, and college employees overtly furthering this ongoing and complex criminal conspiracy are employed with Cal Fire, USCG, Cal Star, and Los Rios College, but not limited to the same, supra.

These corrupted employees regularly fly way off course (evidence of intent), and beeline to the home of a witness for the government (evidence of intent), and where they fly off course be several cities and counties in order to reach the government witness (evidence of intent).

Once they have reached the home, neighborhood, and community of the government witness (evidence of intent), they dive-bomb aircraft towards the home of the witness (evidence of intent), while accelerating (evidence of intent), and where noise research in Rocklin, CA, and in general, proves that this is both physically and emotionally harmful behavior (evidence of intent).

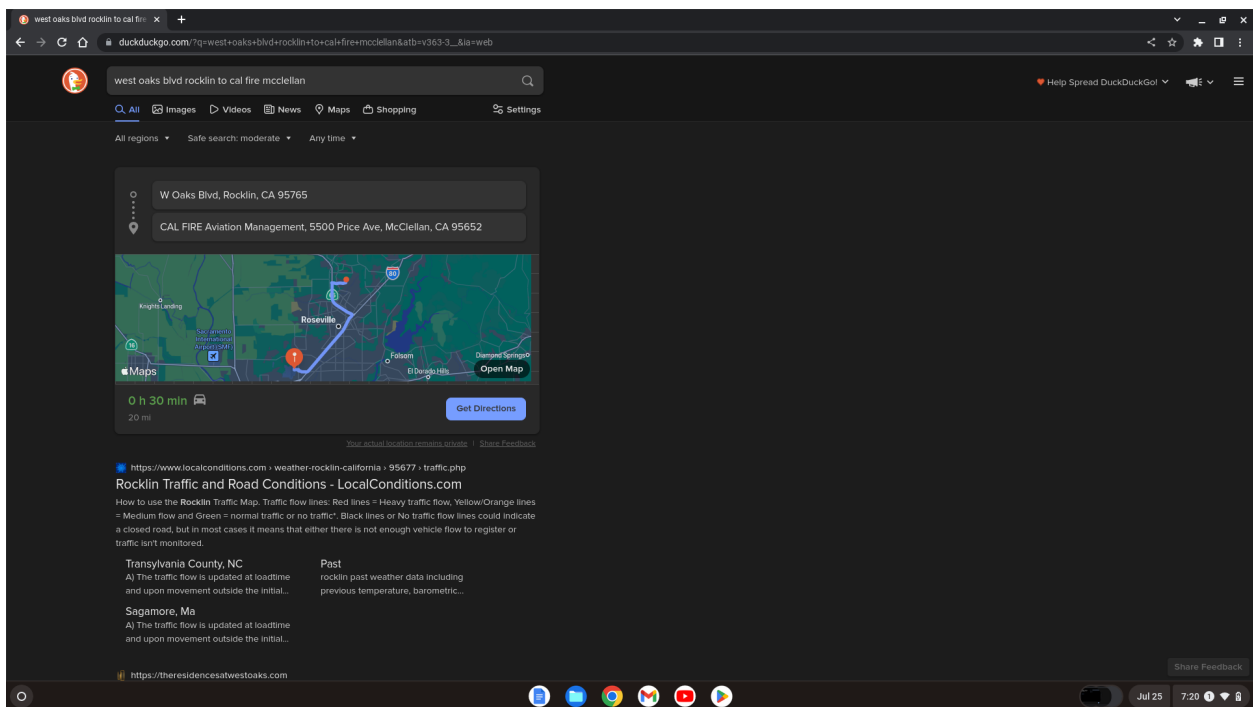
Furthermore, when the criminal conspirators overtly further this ongoing criminal conspiracy to assault and battery with a deadly weapon (aircraft), they often conceal their identity in violation of FAA regulations, employing no caller ID signal, blocked, and fraudulent signals of others, all evidence of intent.

Furthermore, when the criminal conspirators overtly further this ongoing criminal conspiracy to assault and battery with a deadly weapon (aircraft), they are often able to taint the evidence of their ongoing crimes by using radar evasion or manipulation technology, to make it look like they didn't overt further organized crimes out of McClellan Park, but where other radar services online, visual observation, video, and photos prove that at least some of the criminal conspirators are tainting the evidence of their crimes to obstruct justice in an ongoing manner in a separate ongoing obstruction conspiracy spoke than the one associated with government witness intimidation, and the obstruction of justice not limited to these spokes as your indictments have been proving.

Furthermore, the conspirators will often dive-bomb to below the minimum altitude established by the FAA (evidence of intent), pulling up before hitting the home of the witness and the ground, and where pilots are trained in FAA regulations, and so they “know” or it is reasonable to assume that they should “know” not to engage in this sort of criminal conspiracy against government witnesses.

The witness for the government has asked some of these employers and other government agencies to investigate this ongoing harm, and some agencies have refused to do the same, but others have investigated some of these obstruction spokes, and at least one judge found in favor of the government witness, when a university overtly furthered the ongoing conspiracy to obstruct.

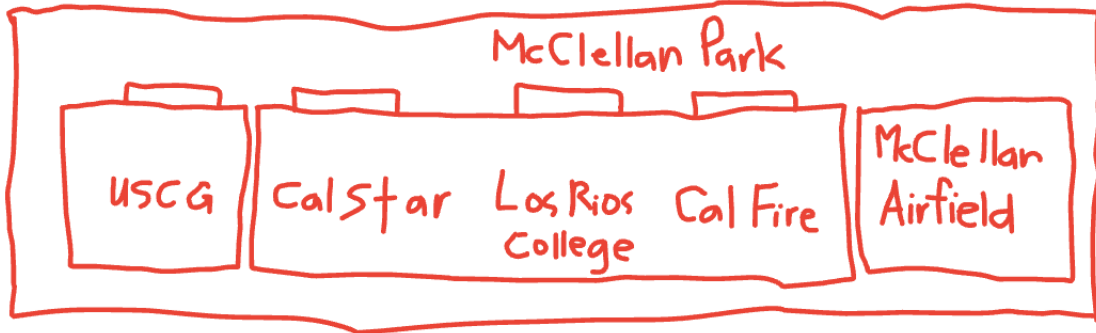
Recidivists from Cal Fire, Cal Star, USCG, and Los Rios College at McClellan Park neighbor one another, and so the respective conspirators overtly furthering the collective ongoing criminal conspiracies have employers who share the same airfield, which is located several cities and counties away from the government witness, 20 miles away, which represents a 30 minute drive from the airfield to the government witness



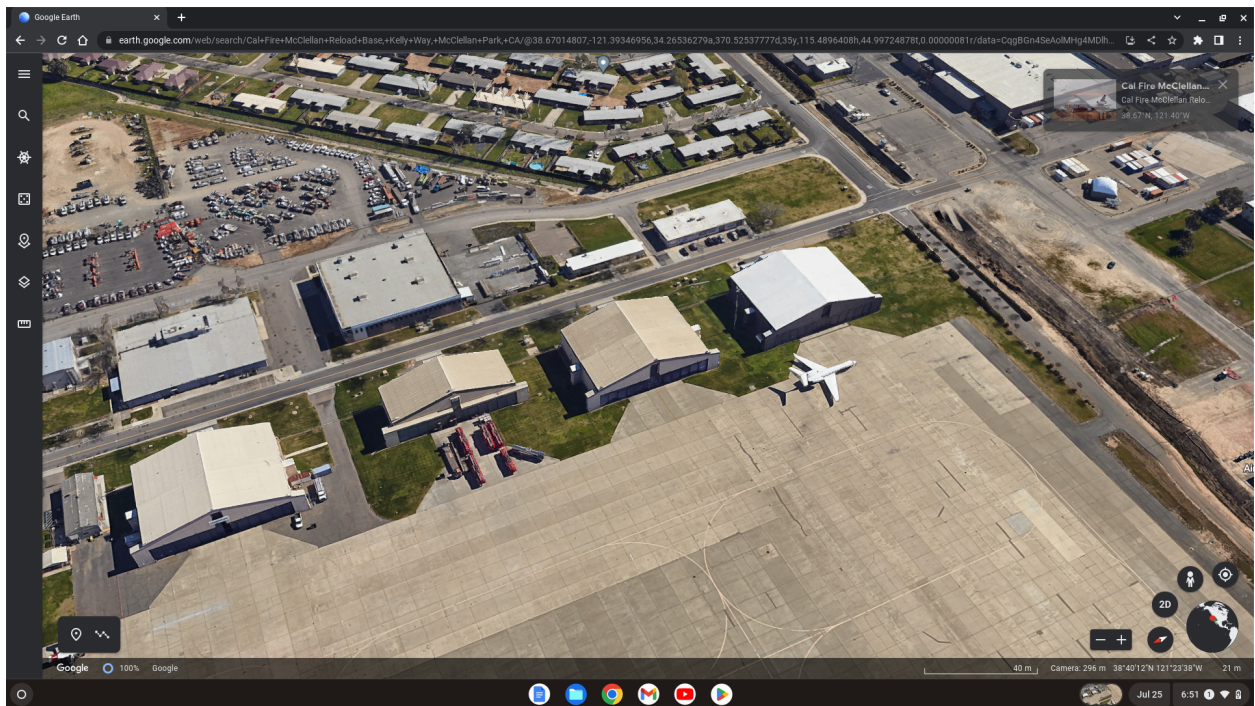
The map above illustrates the 20 mile distance from the ongoing criminal conspirators harming the governments and harming the witness to the governments, across several cities and counties.

The following images below illustrate that the corrupted employees harming the United States of America, the UCSG, the State of California, Cal Fire, Cal Star, and Los Rios College

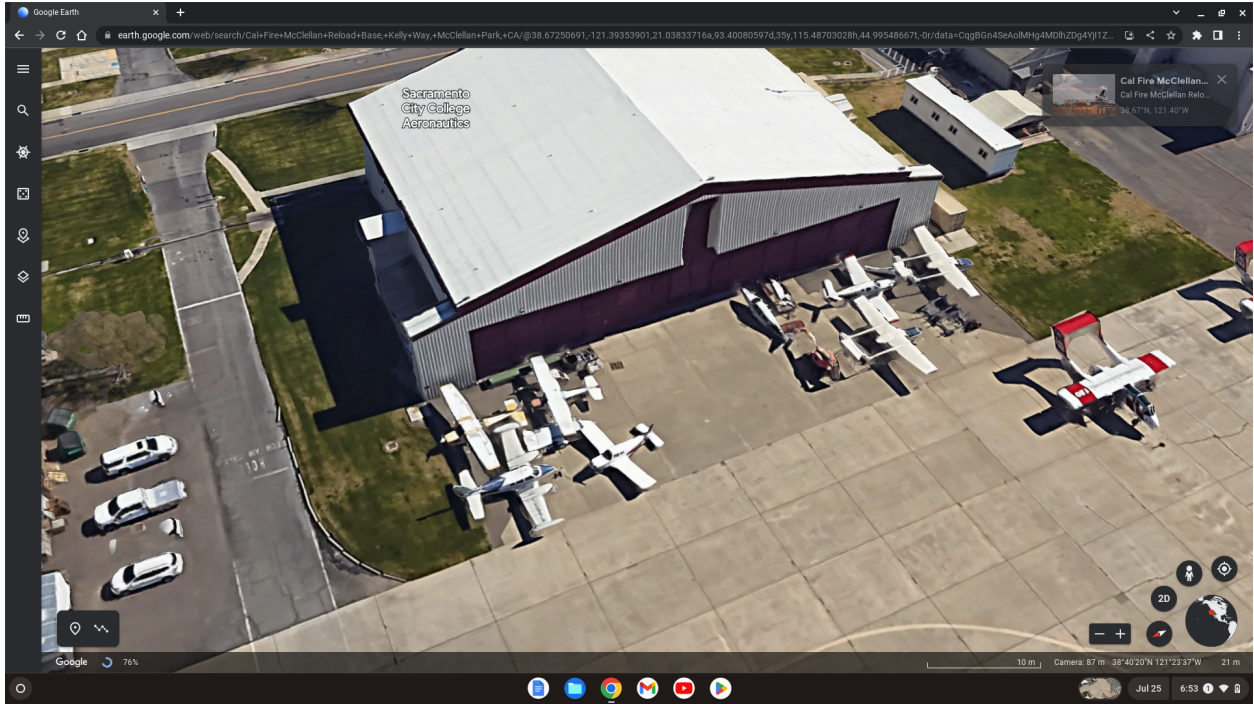
governments, organizations, and college, are employed in very close proximity to one another, illustrated by a hand-drawn map first.



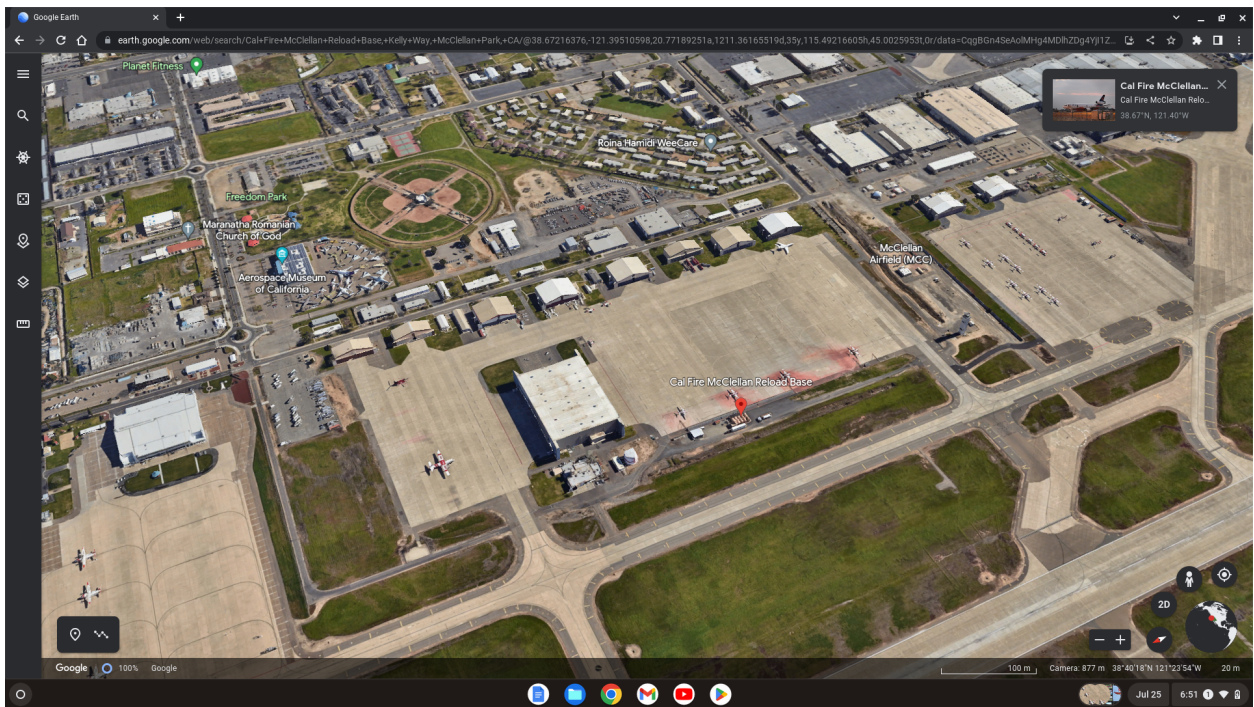
The next image is a Google Earth image of Cal Fire's facility in the illustration above.



The next image is a Google Earth image of Los Rios College's facility in the illustration above, which has unnamed buildings in between the illustration above, so this is relative and not actual positioning, and where Cal Fire's red and white plane is sharing the space in front of Los Rios College, and where this type of Cal Fire plane has been used to threaten the governments' witness, as previously reported to the governments, supra.



The next image is of Cal Star, which shares the same (largest) air field with Cal Fire and Los Rios college, which is a good candidate for how the criminal conspirators corrupting these agencies and college have been communicating to overtly further the criminal conspiracy against the governments and witness(es) for the governments. To the left of the largest airfield is the USCG, who is being harmed by at least one corrupted employee, supra.



A close-up of the USCG service proves the marking on the planes are theirs.

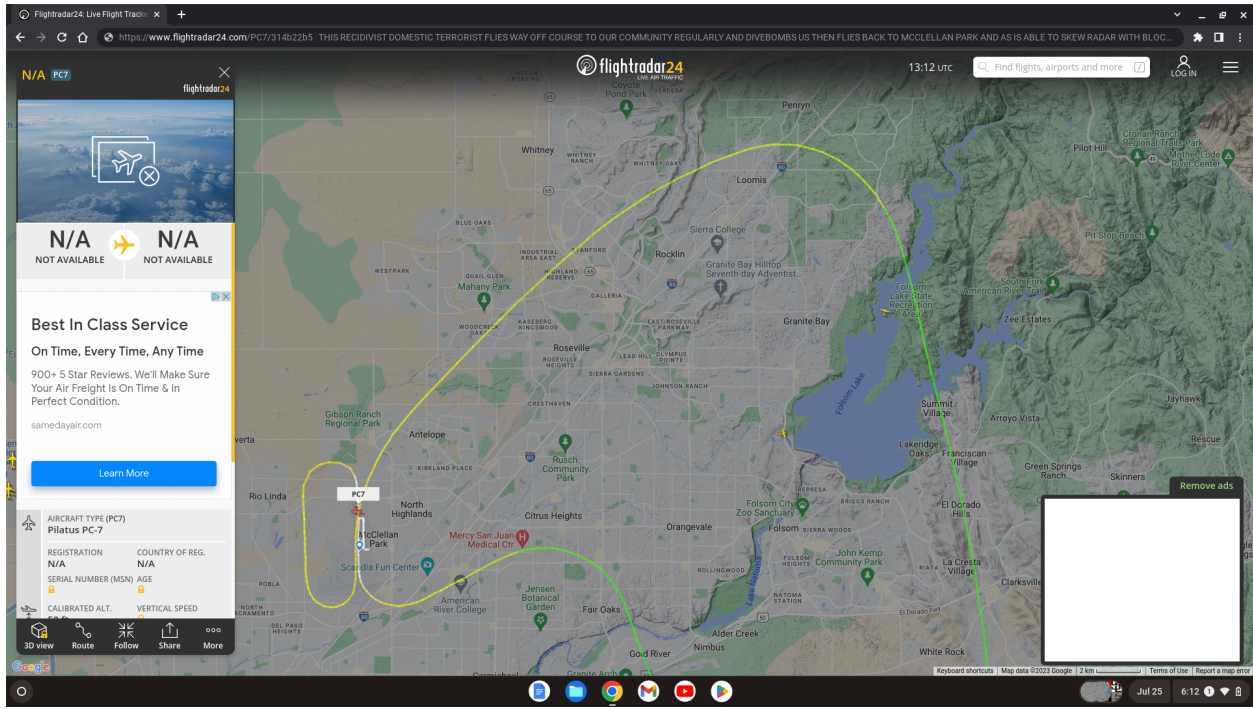


Recidivist PC7 Pilot who is engaged in terrorism (misperceived as domestic terrorism, supra), witness intimidation, obstruction of justice, and assault and battery with a deadly weapon is likely a Cal Fire or Los Rios Pilot

The following is overt furtherance of these criminal spokes by a pilot flying a PC7, circa 6AM, July 25, 2023, before the noise ordinance in Rocklin (evidence of intent), and proves that the PC7 pilot flew way off course by several cities and counties in the opposite direction than the pilot was headed (to MCC aka McClellan Park).

As illustrated below, the pilot was ultimately headed to McClellan Park, and where the most cost-effective path back to MCC was at least Northwest, but the pilot kept flying North, shifting the most cost-effective path to MCC to due West, but the pilot kept flying North to position the deadly weapon for use against the government witness in Rocklin. The pilot then begins a dive-bombing (evidence of intent illustrated by the change in the flight path from higher green to much lower yellow) of the witnesses community have flown off course by approximately 40 miles to achieve the same (evidence of intent). The pilot did so while concealing their identity, which reads N/A or not applicable, because the pilot did not use the radar signal identifier for the aircraft as required by FAA regulations, in order to conceal the identity of the recidivist terrorist, witness intimidator, assault and batterer, and obstructor of justice criminal conspirator. This particular recidivist terrorist, witness intimidator, assault and batterer, and obstructor of justice criminal conspirator is a sadist who enjoys engaging in this conduct around 6AM over the

witnesses home on a regular basis, and note, there is zero competing air trafficking nor weather that the pilot is flying around by beelining to the community of the governments' witness.

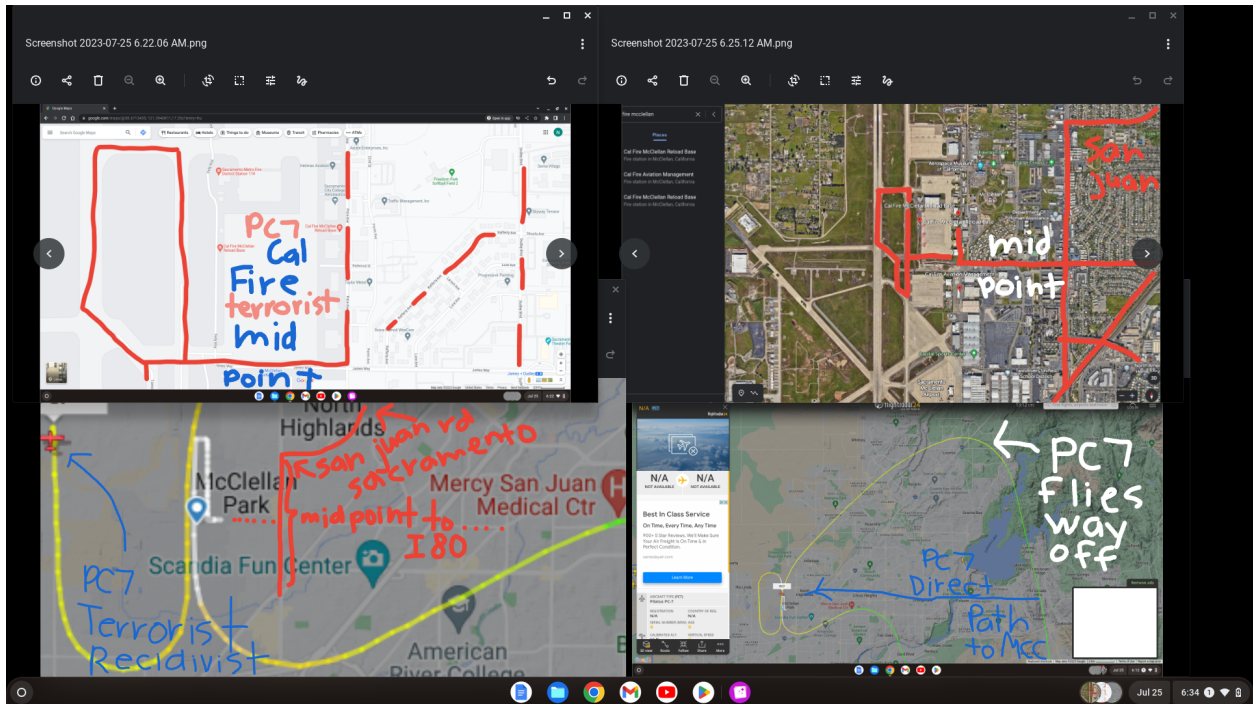


The identity of this recidivist terrorist, witness intimidator, assault and batterer, and obstructor of justice criminal conspirator was further elucidated this morning as illustrated below. In this image, which is a composite of four images, the shared airstrip of recidivists Cal Fire, Los Rios College, and Cal Star was found to be origins and landing of the PC7 recidivist terrorist, witness intimidator, assault and batterer, and obstructor of justice criminal conspirator, proven by the flight path in white, but also by the midpoint between San Juan Road in North Highlands, Sacramento, CA, and Interstate 80 or I-80, I80 in the illustration, which corresponds to the Cal Fire building and/or at least the airfield shared by them.

Flightradar and Radar Box each disappeared the flight path before I could print screen where the plane landed and then rolled, but it was to the starting point, which was captured by the white flight path. As recidivist Cal Star is at the far end of the shared airfield, and as they don't normally conceal their ID when they fly off course to dive-bomb and threaten the governments' witness, they are ruled out here, leaving Los Rios College and Cal Fire, and where Cal Fire's corrupted employee(s) is/are easily one of the greatest offenders and conspirators in the ongoing criminal conspiracy against Cal Fire and the governments, supra.

Los Rios infrequently targets the governments' witness, but does, and the governments appreciate why, and the governments appreciate why Cal Fire and USCG corrupted employees began harming them to conspire to harm their employers and the governments, and

appreciates the other agencies that initially solicited these corrupted employees into the criminal conspiracy, supra. This is overt furtherance of these spokes.



The next evidence proves additional intent as the PC7 criminal conspirator also engaged in conduct and/or in a conspiracy to not register the flights departure, nor it arrival to and from McClellan Park, to further conceal the identity of the criminal conspirator in addition to not using a call signal identifier, so taking more than one measure to conceal the identity of the criminal conspirator while engaging in overt criminal harassment.

MCC Sacramento McClellan Airport

Interested in seeing blocked tail numbers and what FBO aircraft are scheduled to? FBO Toolbox is the ultimate toolkit to sell more fuel and enhance your customer service.

[Discover FBO Toolbox](#)

[Show Features](#)

[View KMCC Airport Stats](#)

ARRIVALS (MORE)				
Ident	Type	From	Depart	Arrive
N293CB	BE9L	Chico Rgnl (CCIC)	07:09a PDT	08:11a PDT
N628BM	SR22	Fresno Yosemite Intl (FAT)	07:13a PDT	08:07a PDT
N11746	C150	Sacramento McClellan (KMCC)	07:03a PDT	08:03a PDT
N8502S	C150	Franklin Fld (F72)	07:42a PDT	08:01a PDT
N889AB	H60	Eagles Nest/David Wardall Fld (CA20)	07:37a PDT	07:48a PDT
N4962L	C152	Sacramento McClellan (KMCC)	06:03a PDT	07:12a PDT
CM070	BE20	Redding Rgnl (KRD0)	11:16p PDT	11:50p PDT
N114FD	UH1	Rio Linda (L38)	11:09p PDT	11:10p PDT
N221KT	SR22	Buchanan Fld (KCCB)	10:36p PDT	11:00p PDT
N11746	C150	Red Bluff Muni (KDBL)	08:39p PDT	10:27p PDT
N849DW	PA31	Sacramento McClellan (KMCC)	08:42p PDT	09:50p PDT
N247TW	C182	Auburn Muni (KAUN)	08:40p PDT	08:54p PDT
N20503	C172	Sacramento McClellan (KMCC)	07:52p PDT	08:50p PDT
TNKR103	MD87	Chico Rgnl (CCIC)	07:44p PDT	08:14p PDT
TNKR40		Chico Rgnl (CCIC)	06:55p PDT	07:46p PDT
TNKR210	B733	Chico Rgnl (CCIC)	07:21p PDT	07:37p PDT
A505		Sacramento McClellan (KMCC)	06:12p PDT	07:07p PDT
N54102	C172	Santa Clara County (KSLV)	06:59p PDT	09:21PM PDT (?)
N2950J	C172	Nevada County (K000)	05:58p PDT	06:30p PDT

DEPARTURES (MORE)				
Ident	Type	To	Depart	Arrive
N6231R	SR22	Henderson Exec (KHN0)	08:11a PDT	11:12a PDT
N208JA	C208		07:51a PDT	
N7370L	C172		07:38a PDT	
N6247J	H258	San Diego Intl (KSAN)	07:06a PDT	08:20a PDT
N460DC	T206	Chico Rgnl (CCIC)	07:05a PDT	07:41a PDT
N11746	C150	Sacramento McClellan (KMCC)	07:03a PDT	08:03a PDT
N4962L	C152	Sacramento McClellan (KMCC)	06:03a PDT	07:12a PDT
ETW	CYPRIT PHILIP B (SACRAMENTO CA) r (MHH)		11:47p PDT	12:39p PDT
N54102	C172	Santa Clara County (KSLV)	10:18p PDT	12:26a PDT
N1160W		Paso Robles Muni (KPRB)	09:24p PDT	10:51p PDT
CM04	EC35	Near Ukiah, CA	09:08p PDT	result unknown (?)
CM070	BE20	Redding Rgnl (KRD0)	08:56p PDT	09:33p PDT
N849DW	PA31	Sacramento McClellan (KMCC)	08:42p PDT	09:50p PDT
N20503	C172	Sacramento McClellan (KMCC)	07:52p PDT	08:50p PDT
N11746	C150	Red Bluff Muni (KDBL)	06:57p PDT	08:06PM PDT (?)
A505		Sacramento McClellan (KMCC)	06:12p PDT	07:07p PDT
N35883	C172	San Carlos (KSQL)	06:10p PDT	07:16p PDT
REH5	EC30	Redding Rgnl (KRD0)	06:02p PDT	06:59p PDT
N766LJ	P288	Palo Alto (KPA0)	06:02p PDT	06:50p PDT

https://flightaware.com/live/flight/N4962L/history/20230725/1309Z/KMCC/KMCC

Jul 25 8:21

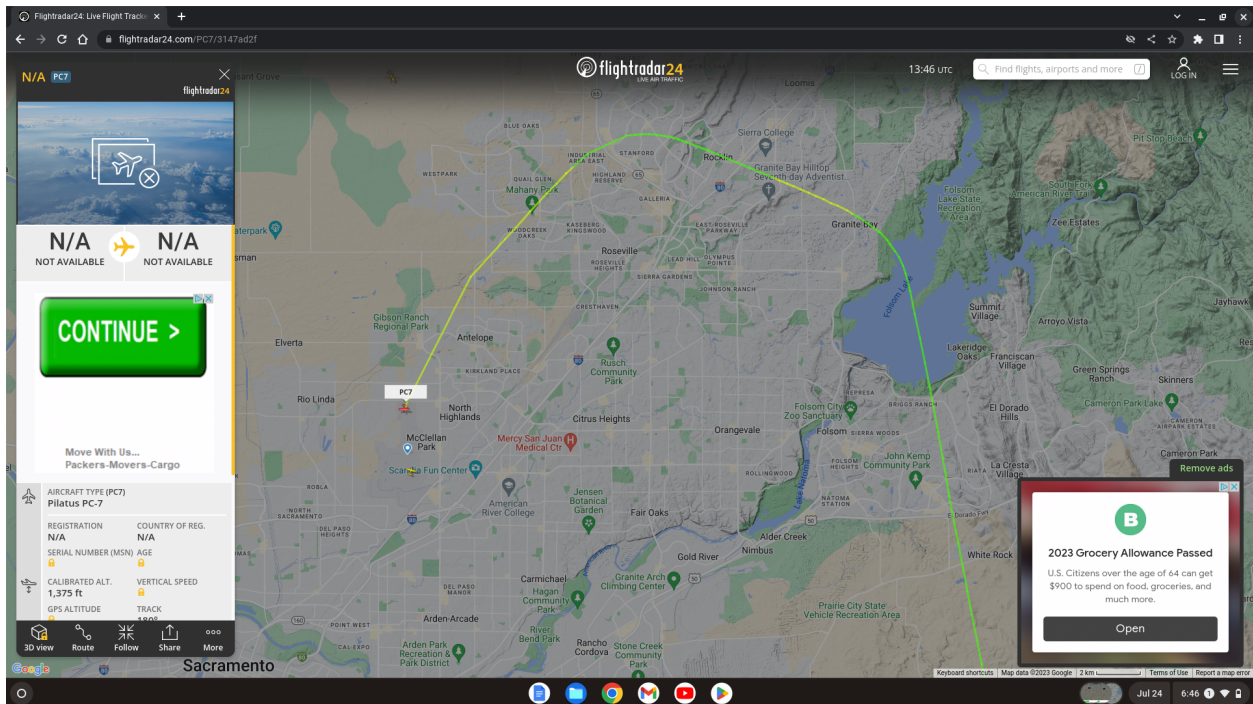
A third effort to conceal the ongoing criminal conspiracy today involves the use of radar evading or manipulating technology, able to retroactively and/or in situ alter the actual flight path to conceal the crimes. This was true this morning and the day before for this same recidivists, proven by visual confirmation of the same where the flight was heard and seen as much closer to the witnesses home than depicted on the flightradar-reported flight path. This results in one of three conclusions, either flightradar and/or someone manipulating their flight path joined the conspiracy this morning and yesterday morning, and/or the pilot employed radar evading/manipulating technology. The flight path depicted above and below for yesterday for the same recidivist was much father away than was heard and seen, and where the witness lives in a valley with 50-300 ft walls/hills that would not allow the witness to observe and hear the PC7 pilot if they were on the other side of the hills, as depicted in the tainted flight path.

The following is the same recidivist from this morning, flying way off course by at least 40 miles to be able to fly through the community of the witness for the governments, with the dates for both events specified in the bottom right corner of both images.

Again, here it is clear there is zero competing traffic nor weather that the PC7 pilot has to fly around and where it is clear that a Northwestern approach was favorable, and where the MCC arrival and departure dates illustrate, there was little to no traffic on the runway either.

But instead, the pilot chose to fly off course by about 60 miles North, to be able to position the deadly weapon through the community of the governments' witness. If this is a government agency or government-funded college then this regular criminal harassment by this criminal conspirator (and the others being funded by the government) is respectfully and collectively resulting in massive waste of government and taxpayer funds in order to intimidate and terrorize

the governments' witness, overtly furthering those criminal spokes linked to defrauding the government, which the government appreciates per the indictments is overt furtherance of these spokes across state lines making the same a federal jurisdiction matter.

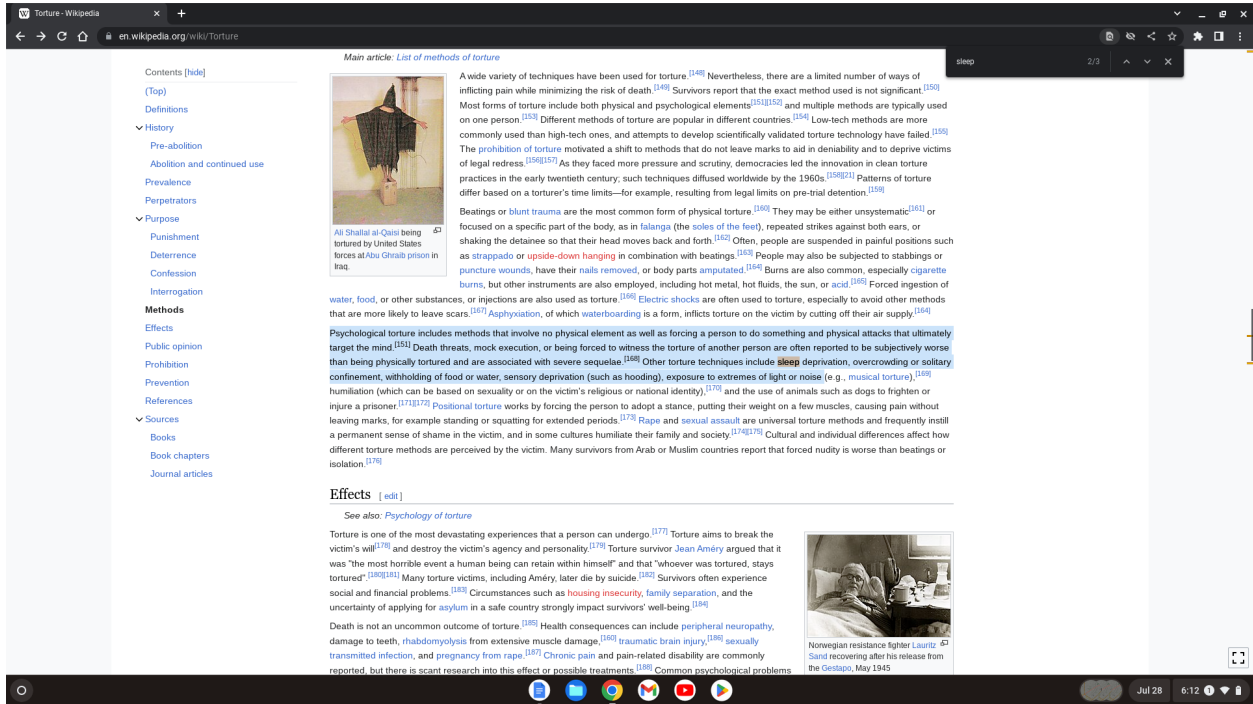


Investigations into torture research specify, “Psychological torture includes methods that involve no physical element as well as forcing a person to do something and physical attacks that ultimately target the mind.^[151] Death threats, mock execution, or being forced to witness the torture of another person are often reported to be subjectively worse than being physically tortured and are associated with severe sequelae.^[168] Other torture techniques include sleep deprivation, overcrowding or solitary confinement, withholding of food or water, sensory deprivation (such as hooding), exposure to extremes of light or noise”.

Accordingly, with nearly daily assault and battery by dangerous weapons (aircraft), by pilots from McClellan Park some 20 miles away, who choose to waste taxpayer funds by flying way off course to dive-bomb the home of the governments' witness, while accelerating towards the witnesses home well before the noise ordinance, there can be no doubt of an intent to cause psychological harm to the witness by depriving the witness of sleep by exposing the witness to extreme noise, and where Rocklin, CA already near exceeds the average healthy noise level, per published noise research.

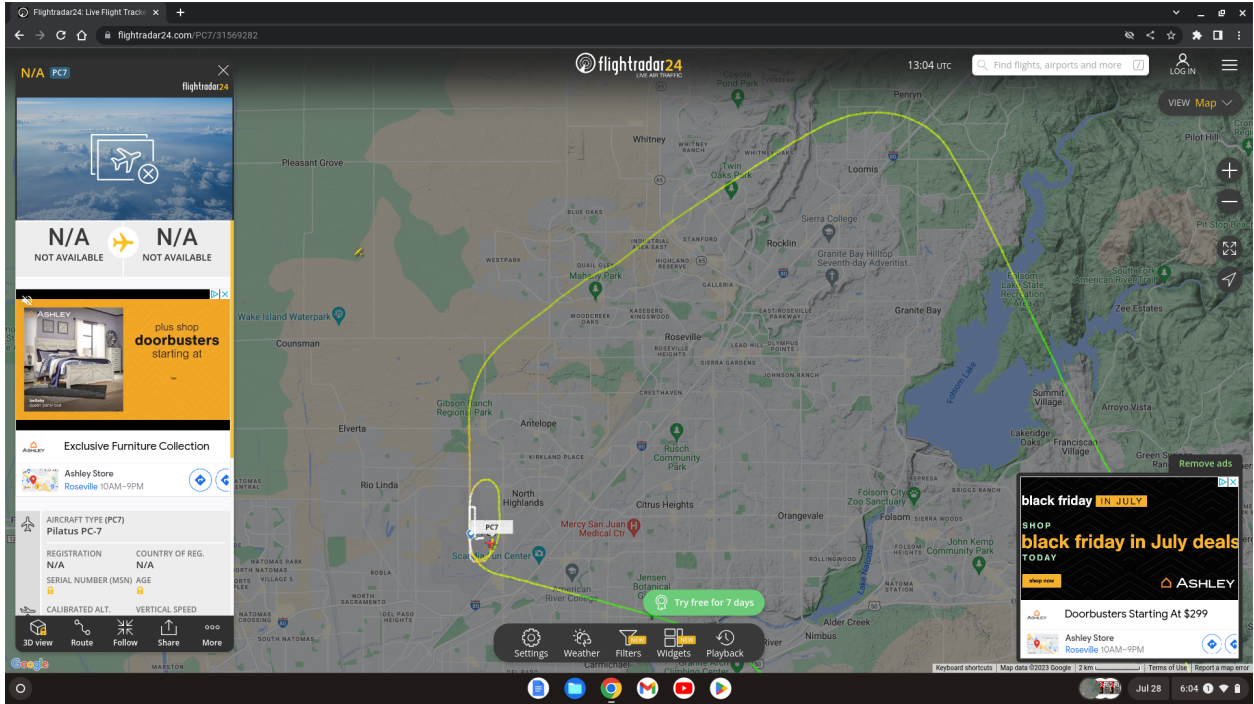
Accordingly, this is a conspiracy to overtly further intentional infliction of severe emotional distress in the government's witness by way of torture, a conspiracy spoke that began 09/21/2014, when the witness was unlawfully stopped, shackled, taken to a GOP-controlled

facility in downtown Sacramento, threatened with execution in the basement of that facility on camera and audio, then tortured from behind, while bound from behind, which would naturally have a chilling effect on any witness to not come forward, with follow-up near daily torture and assault and battery with deadly weapons by those networked with them to intimidate the government's witness in an ongoing manner, with little to no relief, despite asking the government for relief.

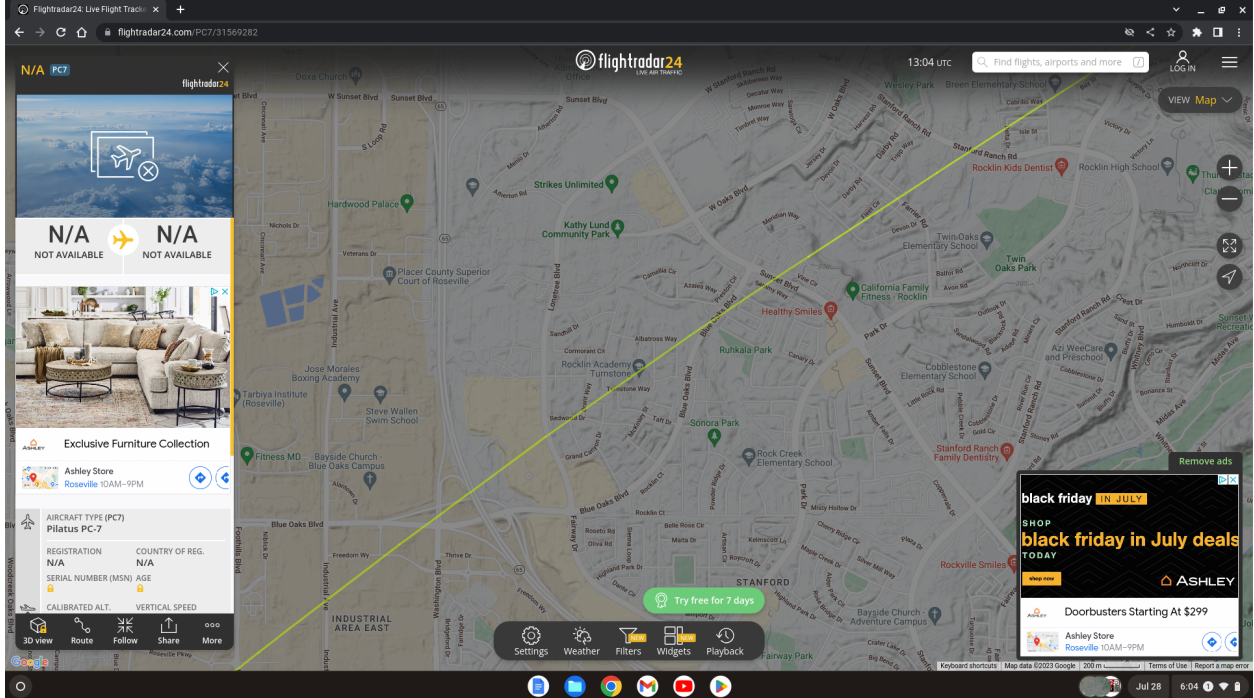


On July 28, circa 6AM, well before the noise ordinance, the witness for the governments was deprived sleep for a third time in the same week, when the pilot of PC7, chose to fly way off course again, and chose to bee-line to the home of the witness, and then chose to dive-bomb the home of the witness, as follows.

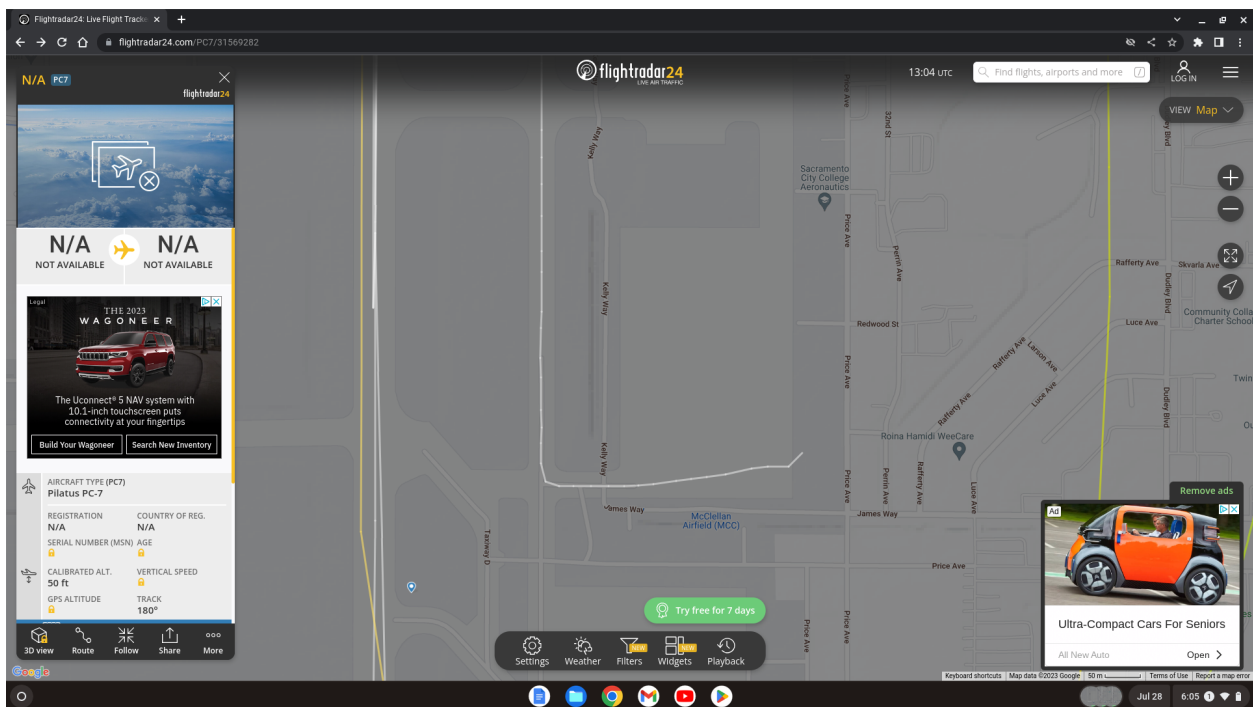
In the image below, it is clear that there is no competing traffic nor weather pattern forcing the pilot to deviate from a straight flight path back to McClellan Park terror cell. Here again, the pilot intended to fly to McClellan Park, but flew an estimated 60 miles off course, flying North past the latitude of their intended destination, instead of Northwest, towards the witness' home, instead of towards the intended destination, by an estimated 20 miles, in order to position the aircraft in such a manner as to facilitate the overt torture event, overt assault and battery with a deadly weapon event, overt witness intimidation event, overt stalking event, and overt criminal harassment event, while concealing their identity by turning off, and/or failing to carry the required call signal identifier – and requiring the pilot to waste more taxpayer and government funds by backtracking in a Southern vector by about 20 miles, having flown about 20 miles off course to terrorize, torture, stalk, intimidate, and assault and batter a witness for the government.



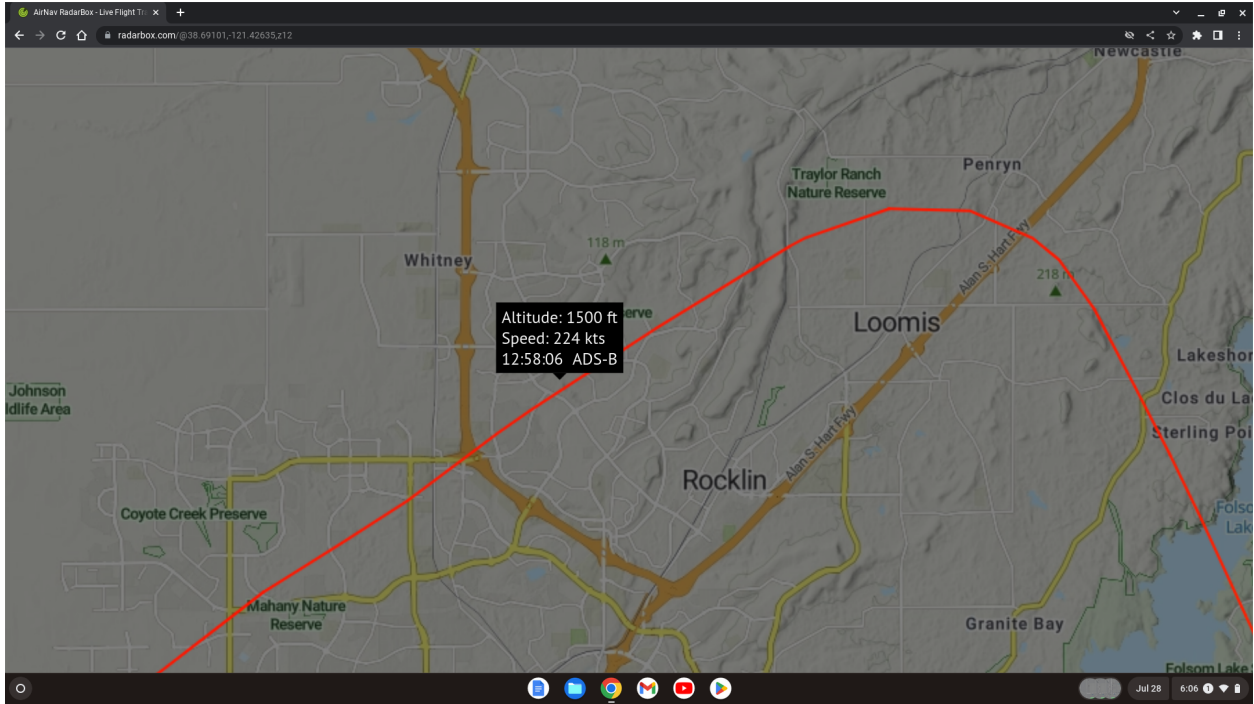
The next image is a close-up of the pilot's flight path in close proximity to the home of the witness, and estimated 200 lateral meters away from the home of the witness, which had the effect of shaking the walls and windows of the home of the witness with very loud sound waves.



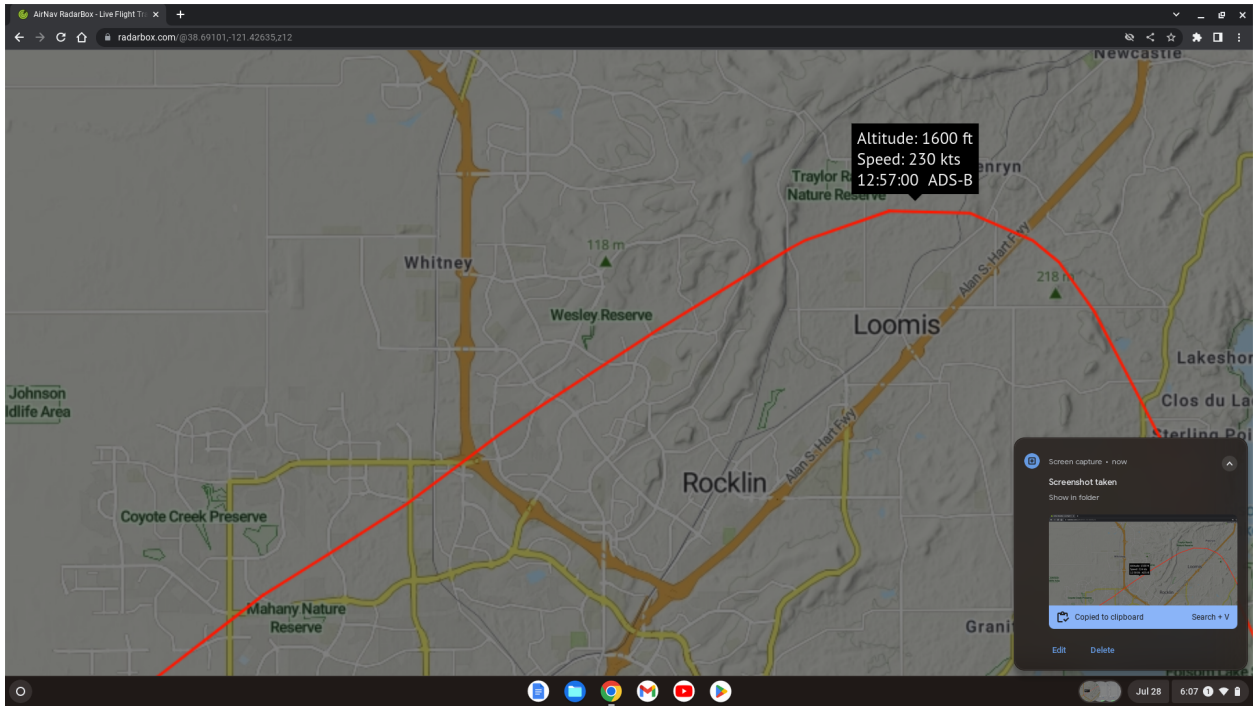
The next image is a close-up of the departure location of the offending recidivist, and where that departure location has been investigated as being a Cal Fire occupied building at McClellan Park terror cell, which shares McClellan Park with co-workers of those who controlled the GOP facility where the witness was threatened with execution, assaulted and battered with a deadly weapon, and tortured from behind, while bound from behind on September 21, 2014, the nexus, and where these coworkers sharing the space with Cal Fire at McClellan Park, have also overtly furthered the ongoing conspiracy to stalk, terrorize, torture, and assault and batter the witness for the government with aircraft but requiring them to fly out of the city and county where taxpayers pay them to operate, to be able to overtly further the same, and where these coworkers have done so at unlawful altitudes, so low, as to again to cause the walls and windows of the witness to shake.



The next image, using a different radar, proves that the offending recidivist on July 28, 2023 at circa 6AM, flew a PC7 aircraft 200 meters away from the home of the witness at 1500 ft in elevation, almost at the minimum lawful altitude at 224 miles per hour.



The next image proves that about 10 miles away from the home of the witness, the repeat offender was at an altitude of 1600 ft, as evidence that the pilot descended over the home of the witness to facilitate a dive-bomb motion over the home of the witness.



The origins of this spoke of the conspiracy, the government appreciates begins with the corrupted and indicted (insurrectionists Jorge Riley, and other insurrectionists within the small city where the witness lives, and in cities surrounding the witness), who were/are employees and/or leadership of Sacramento GOP, Sacramento County agencies, and the Governor's Office Office of Emergency Services (nexus to Cal Fire) back to at least September 21, 2014, supra, then overtly furthered by McClellan Park and/or its tenants' corrupted employees networked to the corrupted employees networked at Sacramento GOP, Sacramento County agencies, and the Governor's Office Office of Emergency Services who were friends and former coworkers linked to the Russians, as the government will appreciate, based on previous communications with the governments' witness.

This conspiracy was reasonable inferred to have been planned and/or overtly furthered by Donald Trump, when he visited McClellan Park (who financed the other Sacramento GOP candidate from Sacramento County who embezzled \$100M, and whose GOP leadership is who controlled the facility where the witness for the government was stalked, threatened with execution, assaulted and battered with a deadly weapon, and then tortured from behind, while bound from behind in violation of the witness' human rights), meeting with Sacramento GOP, Sacramento County agencies (whose leadership publicly supported Trump as staunch supporters after facilitating the torture of the witness in a facility controlled both by Sacramento/CA GOP and Sacramento County), Cal Fire, and/or the Governor's Office Office of Emergency Services, whereafter pilots from those agencies exponentially increased their witness intimidation, obstruction of justice, terrorism (misperceived as domestic terrorism), and assault and battery with deadly weapons from but not limited to the corrupted government agency employees harming them at USCG, Sacramento County, Los Rios College, CalStar, Cal Fire, Louis Gohmert's cryptic USDA Forest Service (see reference to his cryptic moon orbit comment in the context that the witness often checks the tide of California by looking up the phase of the moon), as previously shared with the government, supra.

The following is Trump's usurping of Air Force one, who personally came within 20 miles of the governments' witness, whereafter an exponential escalation of the criminal conspiracy spokes to intimidate the governments' witness, to overtly obstruct justice, overt further terrorism (misperceived as domestic terrorism), RICO, and assault with a deadly weapon continued against the governments' witness, supra.

Trump in California amid devastating fires, as governors put focus on climate change

Trump has shown reluctance to accept the science on climate change.

By [Jordyn Phelps](#)
September 14, 2020, 12:58 PM

California official on 'catastrophic' wildfires: 'Our communities are under threat'
California's Secretary of Natural Resources Wade Crowfoot discusses an exchange he had with President Trump today on how climate change is contributing to West Coast wildfires.

Top Stories

- Bronny James, LeBron's son, suffers cardiac arrest during practice
11 minutes ago
- 20-Year-Old Dies Never Having Aged
Oct 29, 6:19 AM
- Obamas' family chef found dead in pond on Martha's Vineyard: Police
Jul 24, 3:24 PM
- Russian fighter jet damages US Reaper drone with flare over Syria: Officials
4 hours ago
- Former reverend arrested for 1975 murder of 8-year-old girl
Jul 24, 1:33 PM

ABC News Live

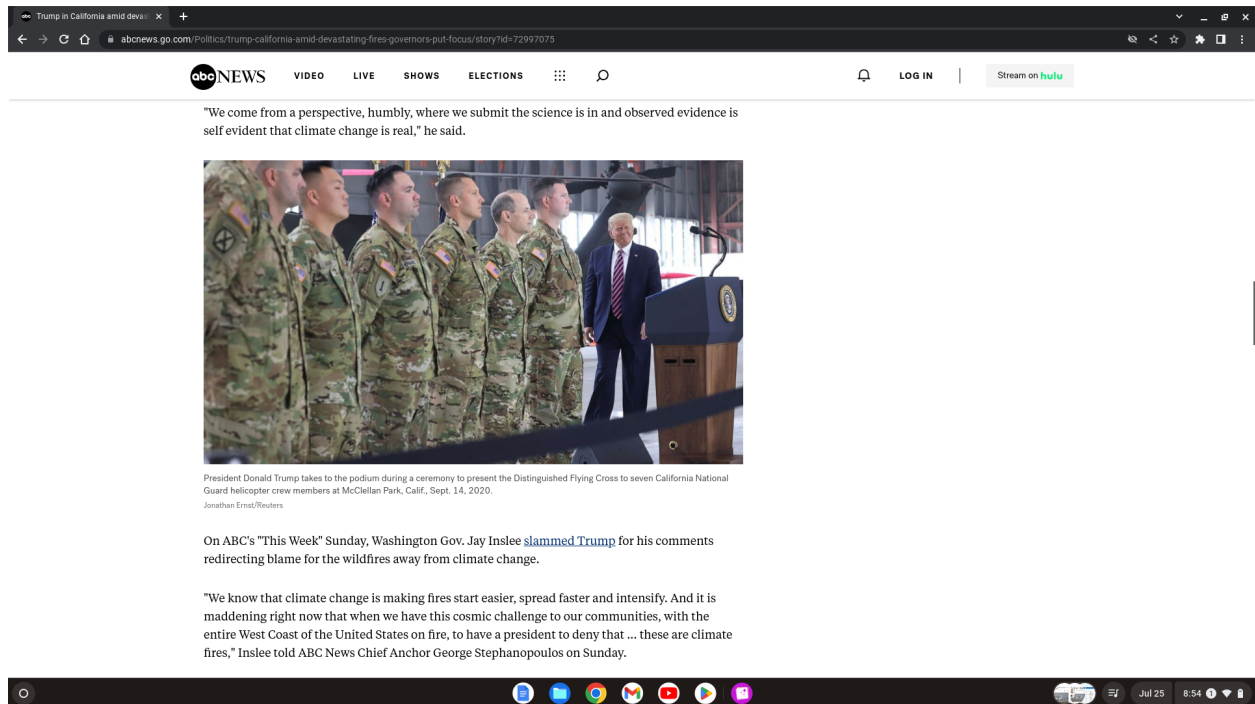
The ongoing conspiracy to attack the witness in “spades” per Trump included fighter jets, jumbo jets, U2 planes, and twin prop Chinook helicopter that flew so close to the witness’ home as to cause the witness to fear they would strike his roof, shaking his walls and windows, and not just almost every day, but throughout almost every day, and almost exclusively linked to pilots networked to Trump’s visit, McClellan Park, Sacramento GOP, CA GOP, GOP/RNC, and their network, which had a chilling effect on the witness to further cooperate with the government, who apparently can’t or won’t stop the conduct to see how far it goes, but where the witness recognizes the government has the indictments in place and/or pending to try and prosecute the same, which the witness appreciates.

The indictments related to the espionage from the Beale employee linked to U2 and to National Guard are also appreciated, and where the total LinkedIn history 2013-2018 for the witness will reveal additional corruption and spokes linked to the terrorism being misperceived as domestic terrorism, under indictment, with keywords Ann, George, Scott, Marie, Endurance, Alfa, Jones, Anthony, Fomitchev, and Dan, but not limited to the same, proving the governments’ former and current investigations and indictments, supra and infra.

The witness for the government also had his patents tampered with under the Jeff Epstein’s Trump administration, and his patent attorneys defrauded and abandoned the witness immediately before a key USPTO filing was due, from a firm whose founders are linked directly to Jeffrey Epstein’s Trump’s attorney, Jeffrey Epstein’s Alan Dershowitz, via O.J. Simpson’s “Dream Team”.

Joining the ongoing conspiracy to attack the witness of the government “in spades”, per Trump, were members of the air national guard in Mississippi and/or Texas, who seemingly committed

government fraud, by making false statements to the government, in order to secure SBIR financing for technology the witness had patented, and Trump's administration financed that individual, but refused to finance the witness who had applied for the same financing for his patent, in the context that Trump and the air national guard at McClellan orchestrated a photo together, below.



The witness for the government, who was stalked, tortured, intimidated, and assaulted and battered with a deadly weapon, was a doctorate of law student at the time, and separately a graduate business faculty member, working for Apollo Education Group, which was sold to Apollo Management – a financier of Jeffrey Epstein's Trump/GOP – and where Apollo Management was largely owned and controlled by Jeffrey Epstein's Leon Black by 2016, which was the same year the witness was run out of Apollo Education Group for "second time" as a faculty member researching GOP and Epstein-linked white collar organized crimes infiltrating and victimizing his family "in spades" between 2002-2014 – the "first time" in 2014 after being tortured by a GOP-controlled staunch supporter of Trump – an unlawful termination that was found to be unlawful by the State of CA in an EDD hearing, after Apollo lied to the EDD, to be able to have EDD deny benefits to the witness, to leave the witness for the government impoverished, and thus unable to defend himself against the crime syndicate of Jeffrey Epstein.

Jeffrey Epstein's criminal orbit conspired to an ongoing conspiracy to interfere, disrupt, and prevent the witness' gainful employment prospects and/or to interfere with his economic activity by distributing a defamatory and gainful employment-ending smear East Bay Express article in 2004, naming and shaming the witness to murder and endangerment of children in illegal medical experiments at a Children's Hospital (and where Alfa Bank's DeVos family connects to Children's Hospital Association via Helen DeVos Children's Hospital) for a billionaire company

that financed the GOP, and who later provided Trump with a \$1M hush money payment in 2017 via Michael Cohen's company and Trump's inaugural committee – a defamatory article published for over a decade by (1) Yahoo (largely owned by Jeffrey Epstein's Leon Black, but operated at the time by MARRISA MEYER, who dined with Jeff Epstein after he was convicted of prostitution with children, and who was the first female engineer at Google, who has a founder who also did the same), (2) Google (whose founder(s) also met with Epstein), and (3) Microsoft (whose founders were found to have not only dined with Epstein, but appear in his Lolita flight logs and/or black book and/or dinners and/or coordinated "financing" with Epstein, as did Google – who also financed Trump/GOP – and where a founder of Microsoft was superfunded by the Trump family during COVID with taxpayer funds – after Trump's General Mike Flynn said that COVID was released on purpose to control, and where Trump's Paul Alexander specified that they wanted to infect, and thus kill, as many people as possible, overtly furthering the murder and exploitation of children at the Children's Hospital in the San Francisco Bay Area in 2002 for the billionaire company financing Trump and paying Michael Cohen hush money).

The witness for the government asked these big tech companies to stop publishing the harmful gainful employment-ending defamatory article, letting them "know" the same was harming him, but they chose to keep publishing the same daily for well over a decade, until such time as the witness for the government's career was totally destroyed, and then Microsoft overtly furthered the conspiracy in 2023, when in a conspiracy with GoDaddy and shortly before a \$1M pitch in Silicon Valley for the financing of the witness' recycling manufacturing technology, each the website and the email system, at each GoDaddy (Trump/GOP financier) and Microsoft (Trump/GOP financier), were deleted, despite the witness buying each of the same this year, the website domain for 5 years, and the email system for 1 year, each disappeared from the internet and/or made unavailable to both the witness and to the public, including the investors the witness needed to pitch to in Silicon Valley where Jeffrey Epstein's Google and Yahoo founders, owners, and/or operators operate.